



PRECISE RESULTS

Product Catalog

2025

TRUST IN EVERY MEASUREMENT

QUALITY IN EVERY TEST



DMC
Material Testing Equipment

www.demcontesting.com

We are Democon

Turkey's most innovative material testing equipment manufacturer

INNOVATIVE PRODUCTS

CUSTOMER ORIENTED SOLUTIONS

FLEXIBILITY IN DESIGN

COMPLYING STANDARDS

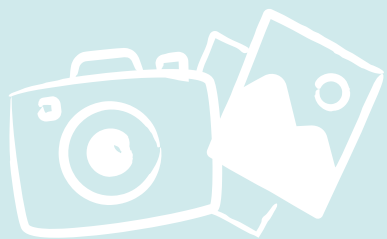
CUSTOMER HAPPINESS

CONTINUOUS IMPROVEMENT

POWER 600 SERVO

POWER-600 Servo Control Tensile Test Machine

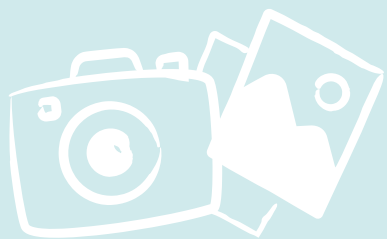
- Very high precision and stability control with servo control unit.
- Real-time test data monitoring with fast computer interface.
- High accuracy calibration settings with high resolution control modules.
- Multi-language support.
- \varnothing 8mm to \varnothing 40mm sample range.
- All test parameters and test results can be transferred to USB memory. If desired, these results can be printed via an external printer.
- Remote connection over the built-in Ethernet port to the device wherever it is in the world to diagnose errors and track device datas.
- 220 VAC, 50-60 hz.



DMC-600

DMC-600 Universal Tensile Test Machine

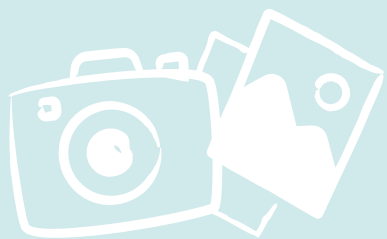
- Ability to perform displacement or load controlled testing with high precision and stability control unit.
- Real-time test data monitoring with fast computer interface.
- High accuracy calibration settings with high resolution control modules.
- Multi-language support.
- \varnothing 8mm to \varnothing 32mm sample range.
- All test parameters and test results can be transferred to USB memory via the 7" touch screen. If desired, these results can be printed via an external printer.
- Remote connection over the built-in Ethernet port to the device wherever it is in the world to diagnose errors and track device datas.
- 220 VAC, 50-60 hz.



FASTCOMP 2000

2000 kN Full Automatic Flatness Controlled Concrete Test Press

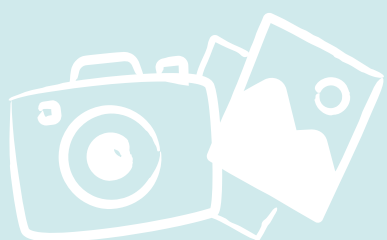
- The device consists of loading body, automatic hydraulic power unit, distance pieces \varnothing 200x50 mm, \varnothing 200x70 mm and \varnothing 200x80 mm, and electronic control systems.
- Angle sensor on the movable head to check flatness of the sample.
- The computer interface software of the device is c++ based and has the ability to run on all Windows and MacOS based operating systems.
- Free software updates / Multi-language support.
- All test parameters and test results can be transferred to USB memory via the 7" touch screen. If desired, these results can be printed via an external printer.
- Improved hydraulic system with special precision pump elements and pressure sensors are used for precise test results.
- Remote connection over the built-in Ethernet port to the device wherever it is in the world to diagnose errors and track device datas.
- 220 VAC, 50-60 hz.



AIR ENTRAINMENT METER

Air Entrainment Meters

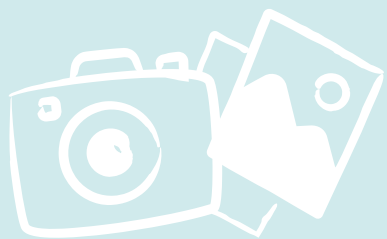
- Air Entrainment Meter, B Type - 7 Liter
- Air Entrainment Meter, B Type - 8 Liter
- The reading instrument can be calibrated by user.
- Up to 22% of entrained air can be measured.
- Not affected by changes in barometric pressures.



ANALOGUE CONCRETE TEST HAMMER

To Determine Concrete Strength

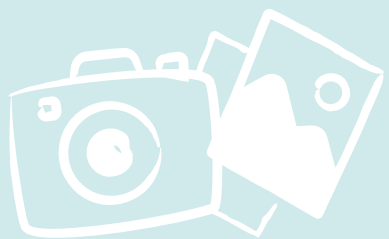
- Measuring range 100 ... 600 kg/cm²
- Nominal kinetic energy 2207 J (2,207 Nm)
- Measuring tip adhesion 0.65 ... 0.15 N
- Radius of round tip 25 mm ±1 mm
- Average rebound value 80 ±2
- Spring deflection 75 mm ±0.3 mm
- Size Diameter 54 x 280 mm
- Weight 1kg



FASTPOL-III V.2

FASTPOL-III V.2 Fully Automatic Grinding Machine - Sample Preparation

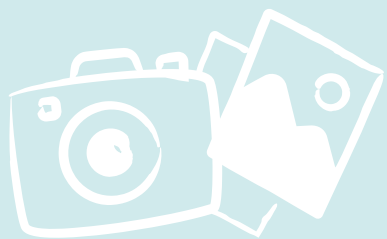
- Fully automatic electronic control system with a 7" touch screen
- Pneumatic sample locking system
- Grind all core samples from 50 mm to 160 mm.
- Preparing recipes according to sample characteristics.
- Abrasion of samples with strength up to 200 MPa
- Grinding steps between 0.5 mm and 1.5 mm can be set.
- Multi-language support.
- Automatic recirculating water spray system against dust.
- Saving the number of samples grinded and the amount of grinding in the device memory.
- The life of the grinding (diamond) blade can be monitored electronically.
- An optional sample surface flatness control device can be connected and sample surfaces can be controlled with 0.01 degree precision via the touch screen on the device.
- Remote connection over the built-in Ethernet port to the device wherever it is in the world to diagnose errors and track device datas.
- 220 VAC, 50-60 hz.



FASTPOL-III V.1

FASTPOL-III Fully Automatic Grinding Machine - Sample Preparation

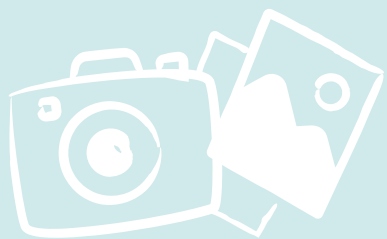
- Fully automatic electronic control system with a 7" touch screen
- Grind all core samples from 38 mm to 100 mm, including 3 core samples of 100x200 mm and 2 core samples of 150x300 mm.
- Preparing recipes according to sample characteristics.
- Pneumatic sample locking system.
- External automatic recirculating water spray system against dust.
- Grinding steps between 0.5 mm and 1.5 mm can be set.
- Multi-language support.
- Automatic water spray against dust.
- Saving the number of samples grinded and the amount of grinding in the device memory.
- The life of the grinding (diamond) blade can be monitored electronically.
- 3 pieces 100x200 mm and 2 pieces 150x300 mm samples can be grinded in 62 seconds
- An optional sample surface flatness control device can be connected and sample surfaces can be controlled with 0.01 degree precision via the touch screen on the device.
- Remote connection over the built-in Ethernet port to the device wherever it is in the world to diagnose errors and track device datas.
- 220 VAC, 50-60 hz.



FASTCUT-III

FASTCUT-III Fully Automatic Core Cutting Machine - Sample Preparation

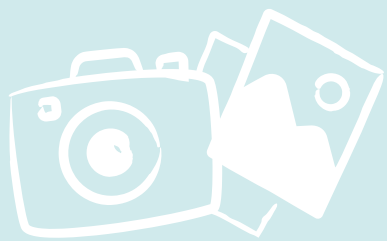
- Automatic electronic control system.
- Cut all cylinder core samples from 38 mm to 100 mm, 3 pieces of 100x200 mm, with an accuracy of 0.1 degree.
- Automatic water spray against dust.
- The cutting process of 3 samples at the same time is in approximately 120 seconds fully automatically.
- The cutting blade automatically returns to the starting point. (Home Position)
- 220 VAC, 50-60 hz.



FASTFLAT

Core Flatness Control Device - Sample Preparation

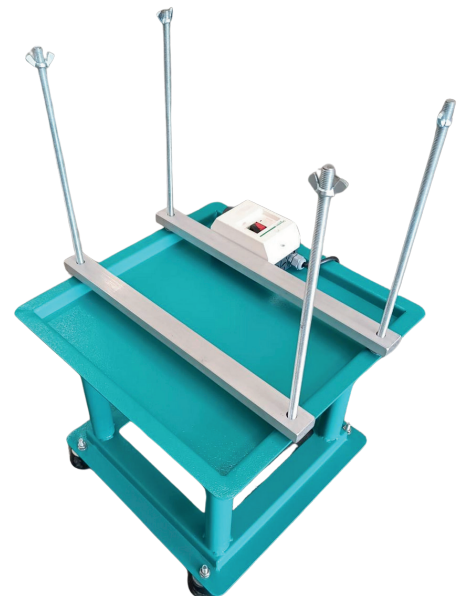
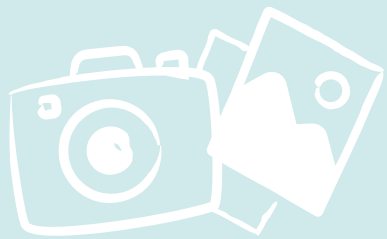
- It can measure the sample surface with a precision of 0.1 degrees in two axes.
- The sample can be easily placed on the ergonomic measurement stand, and measurement results can be quickly obtained.
- Measurement results can be digitally tracked on the 4.3" touchscreen, and recorded in Excel format on a USB flash drive.
- The FastFlat device is electronically and software-compatible with other devices in the DMC FAST product family.
- 220 VAC, 50-60 hz.



VIBRATION TABLES

VIBRATION TABLES in various sizes - Sample Preparation

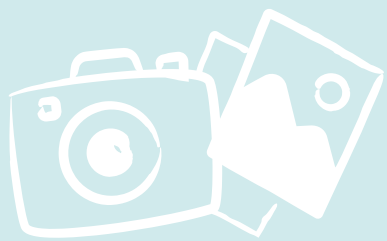
- Fixed amplitude vibration.
- Various size tables.
- Cube or cylinder moulds.
- Control unit and clamping apparatuses.
- 220 VAC, 50-60 hz.



CONCRETE MIXER

Pan Type Concrete Mixer - Sample Preparation

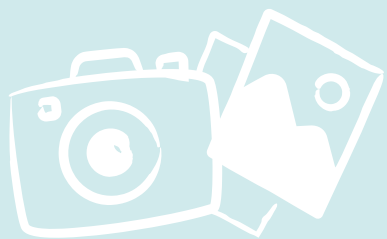
- Laboratory type.
- Digital control with 4,3" touchscreen.
- Different volumes as per customer demand.
- User friendly and easy access to the pan and mixing blades.
- Portability with rubber wheels.
- 220 VAC, 50-60 hz.



CRUSHING VALUE

AVG - Aggregate Crushing Value in various sizes

- Relative measurement of aggregate resistance to crushing under compressive load.
- Various size in set \varnothing 75mm AVG (aggregates <10mm in size) & \varnothing 150mm AVG
- Tamping Rod \varnothing 8x300 mm.
- Tamping Rod \varnothing 16x600 mm.
- Each set consists of steel cylinder, base plate, plunger, cylindrical measure and tamping rod.





©ALL RIGHTS RESERVED

Contact

Malık y Bařkent OSB Mah. 20. Cadde No:12/E
Sincan ANKARA/TURKEY
+90 (532) 227 11 76
+90 (506) 044 44 34
akin@democontesting.com
satis@democontesting.com
www.democontesting.com

